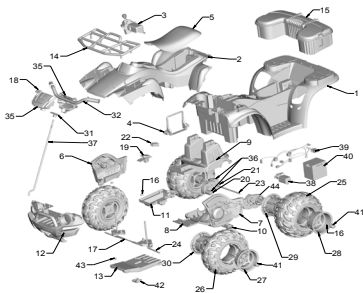


N9731

## Kawasaki Brute Force 12 VOLT ADVANCED SERIES

Age Range:	3-7 Years
Weight Limit:	130 lbs.
Surfaces:	Ultimate Terrain
Speed:	2.5 MPH Forward/Reverse 5.0 MPH Forward
Colors:	Camo Body, Black Wheels
Intro:	2009
Suggested Retail:	\$289.99
Box Dimensions:	27.7 x 29.8 x 49.8; 67 lbs
Warranty:	One Year Vehicle Six Months Battery



Item	Part #	Description	QTY	Item	Part #	Description	QTY
1	N/A	CHASSIS	1 EA	30	N9731-2399	RIM INNER, FRONT	2 EA
2	N/A	BODY	1 EA	31	73690-4289	NECK	1 EA
<b>3</b>	<b>3800-8258</b>	<b>SHIFTER ASSEMBLY</b>	<b>1 EA</b>	32	J5248-2439	HAND GRIP	2 EA
4	3800-7809	BATTERY RETAINER	2 EA	35	N9731-9150	HANDLE BAR ASSY. FRONT/REAR	1 EA
5	B9785-2159	SEAT, UTILITY QUAD	1 EA	<b>36</b>	<b>J5248-9779</b>	<b>MTRGRBX ASSY W/ WIRES - RIGHT</b>	<b>1 EA</b>
6	B9785-2269	FALSE MOTOR, RIGHT	1 EA	37	J5248-4559	STEERING COLUMN (CAP BELOW)	1 EA
7	B9785-2279	FALSE MOTOR, LEFT	1 EA	38	00801-1480	CHARGER 12V PROBE	1 EA
8	B9785-2249	MOTOR HOUSING, BOTTOM	1 EA	<b>39</b>	<b>3800-8264</b>	<b>HARNASS ASSY.</b>	<b>1 EA</b>
9	B9785-2259	MOTOR HOUSING, UPPER	1 EA	40	00801-1460	12 V BATTERY	1 EA
10	B9785-2239	BUSHING PLATE, HITCH	1 EA	41	N1973-2549	HUBCAP CENTER	4 EA
11	B9785-2289	COVER, FOOT BOARD, LOWER	1 EA	42	J5248-2639	STEERING COLUMN CLIP	1 EA
12	J5248-2259	BRUSHGUARD	1 EA	43	00801-0196	7/16 FLAT WASHER N/A	2 EA
13	J5248-2509	BASE PLATE	1 EA	<b>44</b>	<b>J5248-9789</b>	<b>MTRGRBX ASSY. W/ WIRES - LEFT</b>	<b>1 EA</b>
14	J5248-2289	RACK FRONT	1 EA	<b>Parts Not Shown</b>			
15	N9731-9309	ASSEMBLY REAR STORAGE BOX	1 EA	<b>Description</b>			
16	0801-0226	.437 RETAINER	4 EA	<b>00968-2915</b>	<b>MTRGRBX ASSY W/O WIRES</b>	<b>2 EA</b>	
17	J5248-9030	STEERING LINKAGE ASSY.	1 EA	73610-2689	BUSHING .437 LONG	2 EA	
18	00801-1503	SMALL, PW-EMBLEM	1 EA	74550-2689	AXLE BUSHING	2 EA	
<b>19</b>	<b>J5248-9449</b>	<b>FOOTBOARD ASSY.</b>	<b>1 EA</b>	0801-0318	3/8-16 NYLOK HEX NUT	4 EA	
<b>20</b>	<b>00968-2705</b>	<b>MTR/PINION</b>	<b>2 EA</b>	J5248-9279	HARDWARE BAG	1 EA	
<b>21</b>	<b>00968-2807</b>	<b>GEARBOX</b>	<b>2 EA</b>	0912-8001	8 X 3/4" SCREW	15 EA	
22	J4394-9059	BATT LIFE INDICATOR	1 EA	N9731-0320	LABEL SHEET	1 EA	
23	J5248-4509	REAR AXLE	1 EA	N9731-0920	MANUAL	1 EA	
24	J5248-4519	FRONT AXLE	2 EA	<b>00801-0923</b>	<b>CONTROL SWITCH (shifter)(rocker)</b>	<b>2 EA</b>	
25	J5248-2359	WHEEL, REAR	2 EA	00801-1620	STEERING COLUMN CAP	1 EA	
26	J5248-2369	WHEEL, FRONT	2 EA	<b>00801-1531</b>	<b>TIP/LIFT SWITCH</b>	<b>2 EA</b>	
27	N9731-2379	RIM OUTER, FRONT	2 EA	<b>00801-1566</b>	<b>FOOTSWITCH (plunger)</b>	<b>1 EA</b>	
28	N9731-2479	RIM OUTER, REAR	2 EA				
29	N9731-2389	RIM INNER, REAR	2 EA				

10/7/2008 9:37