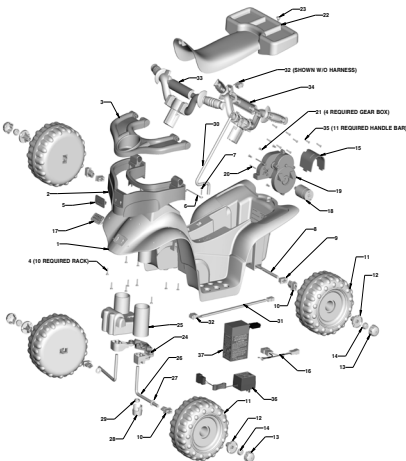


## K0451 Lil Barbie Trail Rider (TRU) Toddler SERIES

Age Range:	12-36 months
Weight Limit:	40 lbs. Grass/Asphalt/Hard Surfaces
Surfaces:	
Speed:	2 MPH Forward Pink Body/Purple Seat/Purple Wheels
Colors:	Seat/Purple Wheels
Intro:	2006
Suggested Retail:	\$79.99 26.250 x 13 x 6.375;
Box Dimensions:	17 lbs
Warranty:	One Year Vehicle Six Months Battery



Item	Part Number	Description	QTY	Item	Part Number	Description	QTY
1	N/A	CHASSIS DRILLED	1	24	K0451-9329	STEERING LINKAGE ASSY	1
2	NA	RACK	1	25	K0451-2139	BRUSH GUARD	1
3	K0451-2129	LID, STORAGE RACK	1	26	77760-4519	FRONT AXLE	2
4	0912-8001	#8 X .750 PH PLAS SCREW	10	27	0801-0253	5/16 TIGHT TOL WASHER	2
5	00801-1503	PW-EMBLEM	1	28	J8473-2359	STEERING ROD CAP	1
6	74230-4129	BATTERY RETAINER	1	29	00905-0116	3/18-16 NYLOK HEX NUT	1
7	0801-0228	#8-18 X 7/8 AB PHIL TRUSS SCREW	1	30	J8473-4539	STEERING COLUMN	1
8	77760-4529	REAR AXLE	1	31	3800-7785	HANDLEBAR HARNESS	1
9	74504-2549	BUSHING, RECT NO EXT	2	<b>32</b>	<b>00801-0697</b>	<b>SWITCH, SIGNALUX</b>	<b>1</b>
10	78560-2659	BUSHING, RECT W/EXT	4	33	K0451-9209	*HANDLEBAR, FRONT	1
11	K0451-2919	WHEEL	4	34	K0451-9209	*HANDLEBAR, REAR	1
12	78780-2128	WHEEL BUSHING	4	35	0912-6002	#6 X .750 PLASTITE	11
13	K0451-2349	COVER, HUBCAP	4	36	00801-0976	CHARGER 4AH	1
14	0801-0604	.354 RETAINER PALNUT	4	37	00801-1230	6V, 4AMP BLUE BATTERY	1
15	K0451-2159	MOTOR COVER	1	<b>PARTS NOT SHOWN</b>			
<b>16</b>	<b>77760-9699</b>	<b>MAIN HARNESS</b>	<b>1</b>	<b>Part Number</b>	<b>Description</b>	<b>QTY</b>	
17	00801-1503	LOGO, PW-EMBLEM	1	00801-1567	Wrench	1	
<b>18</b>	<b>00968-3700</b>	<b>MOTOR, PINION</b>	<b>1</b>	0801-0198	Lock Out Screw	1	
<b>19</b>	<b>00968-3800</b>	<b>#10 GB BLK</b>	<b>1</b>	<b>00968-3900</b>	<b>Motor Gearbox Assy</b>	<b>1</b>	
20	00801-0198	M3-.5 X 32 MM NYLOK SCREW	2	K0451-0920	MANUAL	1	
21	0801-0202	#8 x .500 PH PLAS SCREW	4	K0451-0310	DECAL SHEET	1	
22	3800-8128	SEAT LABELED	1				
23	78570-2439	LOCK FASTENER	1				

**Bold and Underlined parts are to be purchased and installed by Service Centers only. These may not be sold directly to consumers by Service Centers or Fisher-Price.** #33 & #34 are shown on the diagram. Both consist of the handlebar assy.

**1/30/2008 15:38**