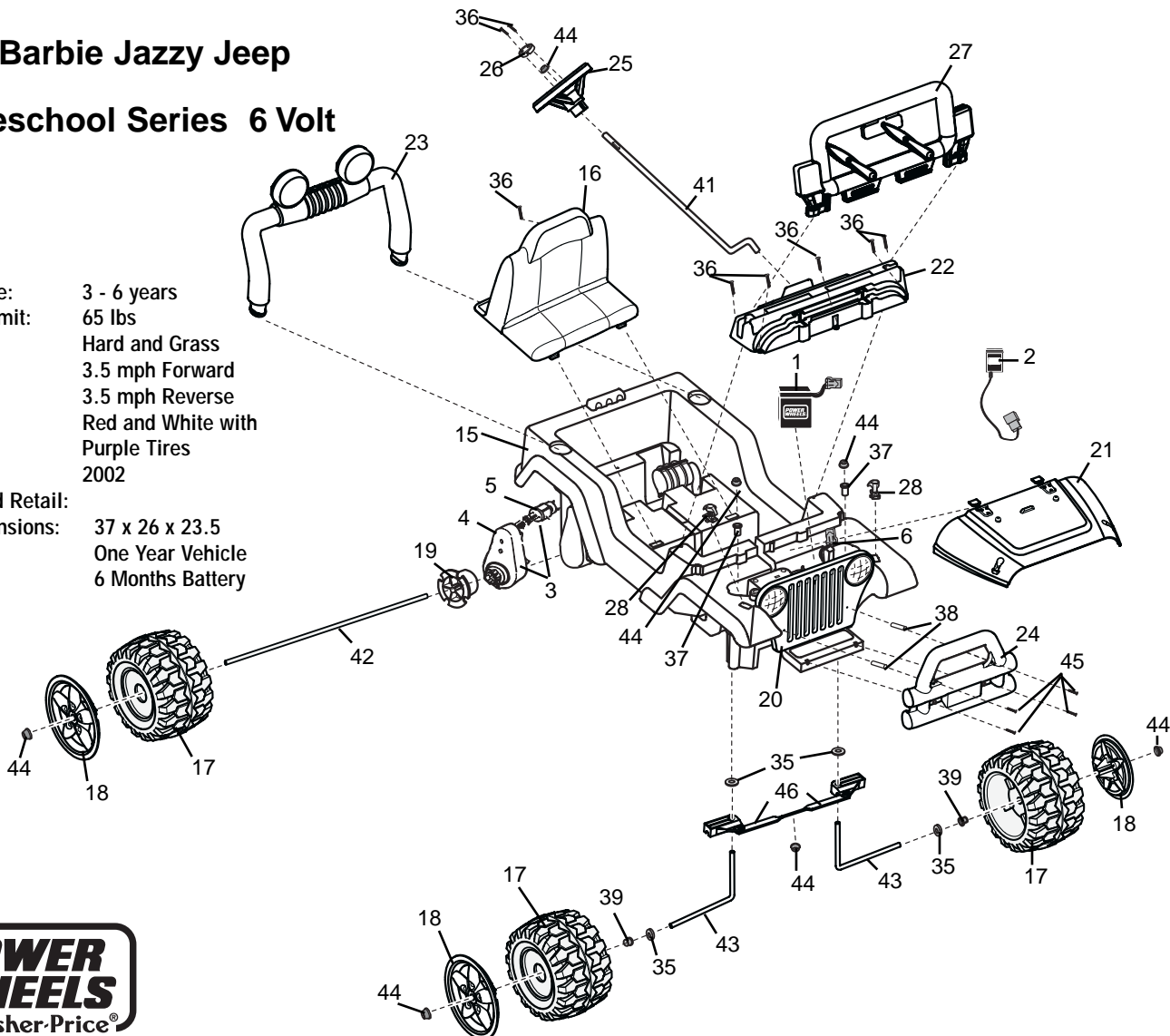


# B2077-9993

## Barbie Jazzy Jeep

### Preschool Series 6 Volt

Age Range: 3 - 6 years  
 Weight Limit: 65 lbs  
 Surfaces: Hard and Grass  
 Speed: 3.5 mph Forward  
 3.5 mph Reverse  
 Colors: Red and White with  
 Purple Tires  
 Intro: 2002  
 Suggested Retail:  
 Box Dimensions: 37 x 26 x 23.5  
 Warranty: One Year Vehicle  
 6 Months Battery



Item No.	Description	Part No.	Qty.	Item No.	Description	Part No.	Qty.	Item No.	Description	Part No.	Qty.
----------	-------------	----------	------	----------	-------------	----------	------	----------	-------------	----------	------

**Working / Electrical Parts**

1	Battery	00801-0712	1
2	Charger	00801-0974	1
3	<b>Motor Gearbox Assembly</b>	<b>74180-9519</b>	<b>2</b>
4	<b>Gearbox W/out Motor</b>	<b>74550-9279</b>	<b>2</b>
5	<b>Motor Pinion Assembly</b>	<b>74580-9539</b>	<b>2</b>
6	<b>Main Harness Assembly</b>	<b>73610-9579</b>	<b>1</b>

**Plastic / Other Parts**

15	Body N/A	3800-7093	1
16	Seat	B2077-2319	1
17	Wheel	B2077-2459	4
18	Hubcap	74440-2579	4
19	Wheel Driver	74460-2249	2
20	Grill w/Lenses	3800-6780	1
21	Hood	3800-7094	1
22	Dash	3800-7095	1
23	Roll Bar	B2077-2339	1
24	Brushguard	B2077-2349	1
25	Steering Wheel	B2077-2379	1
26	Steering Wheel Button	B2077-2729	1
27	Windshield	B2077-2619	1
28	Hood Latch	B2077-9559	2

**Hardware / Metal Parts**

35	Washer #10 N/A	0801-0195	4
36	Screw #8 3/4"	0912-8001	9
37	Bushing Long, Black .437	73610-2689	2
38	Spacer Brushguard/Bumper	74460-2069	2
39	7/16" Bushing Round, Black	74550-2689	4
40	Battery Retainer Assm.	75548-9409	1
41	Steering column	73610-4239	1
42	Rear Axle	73610-4519	1
43	Front Axle	73610-4529	2
44	Cap nut .437	0801-0227	10
45	Screw Trusshead 8 x 4 N/A	0801-0301	4
46	Steering Linkage	73610-9419	1

**Parts Not Shown**

Parts Bag	B2077-9249	1
Hardware Bag	B2077-9059	1
Owner's Manual	B2077-0920	1
Main Decal Sheet	B2077-0310	1
Small Label Sheet	B2077-0320	1
<b>Footswitch plunger switch</b>	<b>00801-0933</b>	<b>1</b>
J-Lock Fastener	77571-2239	1
Control Switch F/R	00801-0885	1
Cap nut tool	78640-2629	1
Footboard	B2077-9289D	1

N/A = Not Available

Rev. 08/05/04

**Bold and Underlined parts are to be purchased and installed by Service Centers only. These items may not be sold directly to consumers by Service Centers or Fisher-Price.**