

Age Range: 1-3 Yrs.  
 Weight Limit: 40 Lbs.  
 Surfaces: Hard, Grass & Carpet  
 Speed: 1 MPH  
 Colors: Red Body  
 Blue Seat  
 Yellow Trim  
 Black Handlebars  
 Black Wheels

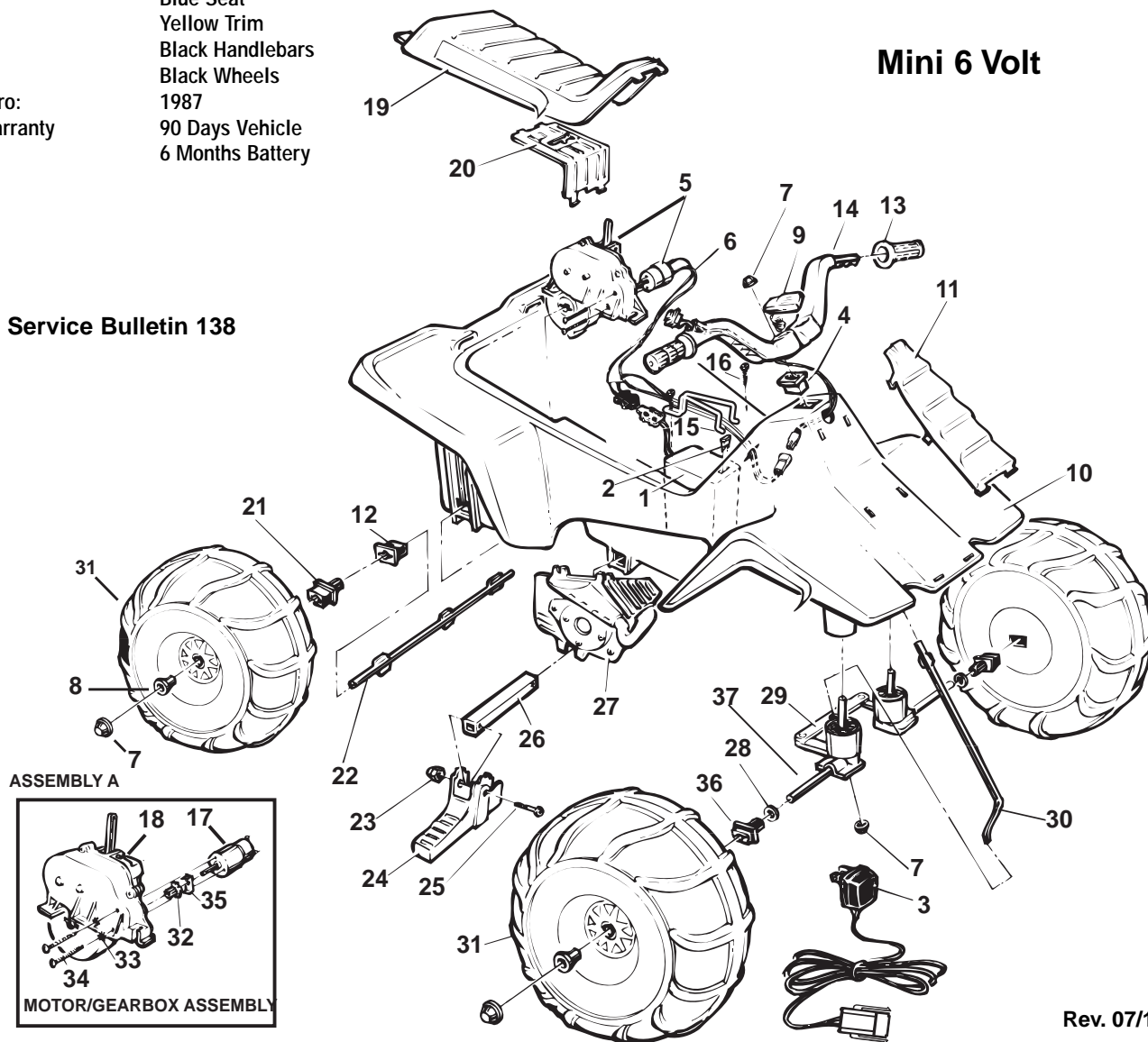
Intro: 1987  
 Warranty: 90 Days Vehicle  
 6 Months Battery

# 76298-9993 / 83600

## LIL COYOTE®

### Mini 6 Volt

#### Service Bulletin 138



Rev. 07/10/03

Item No.	Description	Part No.	Qty.	Item No.	Description	Part No.	Qty.	Item No.	Description	Part No.	Qty.
1	*Battery 6 Volt (Type H)	00801-1234	1	15	Battery Retainer	74504-4429	1	30	Steering Column N/A	76940-4239	1
2	25 Amp Fuse	0801-0151	1	16	#8 x 3/4" Plascrew	0801-0223	1	31	Wheel	73237-2469	4
3	* Charger 6 volt	00801-0975	1	<b>17</b>	<b>Motor w/ Pinion</b>	<b>74590-9539</b>	<b>1</b>	32	Motor Drive Gear N/A	74504-2259	1
4	Switch Assm.	78560-9799	1	<b>18</b>	<b>#5 Gearbox</b>	<b>72629-9259</b>	<b>1</b>	<b>33</b>	<b>Star Washer N/A</b>	<b>0801-0330</b>	<b>2</b>
5	#5 Motor/Gearbox Assy (Includes #17,18,32,33,34 and 35)	74504-9519	1	19	Seat (N/A)	80067-0037	1	<b>34</b>	<b>Motor Bolt</b>	<b>0801-0269</b>	<b>2</b>
<b>6</b>	<b>* Wiring Harness (Main) (N/A)</b>	<b>73560-9799</b>	<b>1</b>	20	Motor Cover	73560-9489	1	35	Lock Washer	0801-0329	1
7	.354 White Cap Nut	0801-0548	6	21	Bushing w/Long Extension	78560-2659	2	36	Bushing w/ Short Extension (N/A)	80009-0035	3
8	Wheel Bushing	78560-2679	4	22	Rear Axle	74504-4539	1	37	Front Axle	74504-4509	2
9	Microphone/Cord Assy.	74550-9479	1	23	Acorn Nut	0801-0218	2	<b>PARTS NOT SHOWN</b>			
10	Body (N/A)	77440-2109	1	24	Footpeg	77440-2159	2				
11	Grill	76920-2149	1	25	1-1/4" Shoulder Bolt	0801-0304	2		Retainer Clip (N/A)	80001-0096	2
12	Bushing w/o Extension	74504-2549	2	26	Footpeg Support	74504-2179	1		Assembly Manual (N/A)	80034-0027	1
13	Handgrips	74504-2219	2	27	False Motor Set (N/A)	80021-0027	1		Use and Care Manual (N/A)	80034-0028	1
14	Handlebar/Switch Assy. (N/A)	80029-0018	1	28	5/16" Washer	0801-0253	2		Decal Sheet (N/A)	802017-0738	1
				29	Steering Linkage	74504-4219	1				

\*See Service Bulletin 138  
 N/A = Not Available

**Bold and Underlined parts are to be purchased and installed by Service Centers only. These items may not be sold directly to consumers by Service Centers or Fisher-Price.**

