

Age Range: 1-3 Yrs.
 Weight Limit: 40 Lbs.
 Surfaces: Hard, Grass & Carpet
 Speed: 1 MPH
 Colors: White Body
 Pink Wheels, Seat & Handlebars
 Yellow Trim

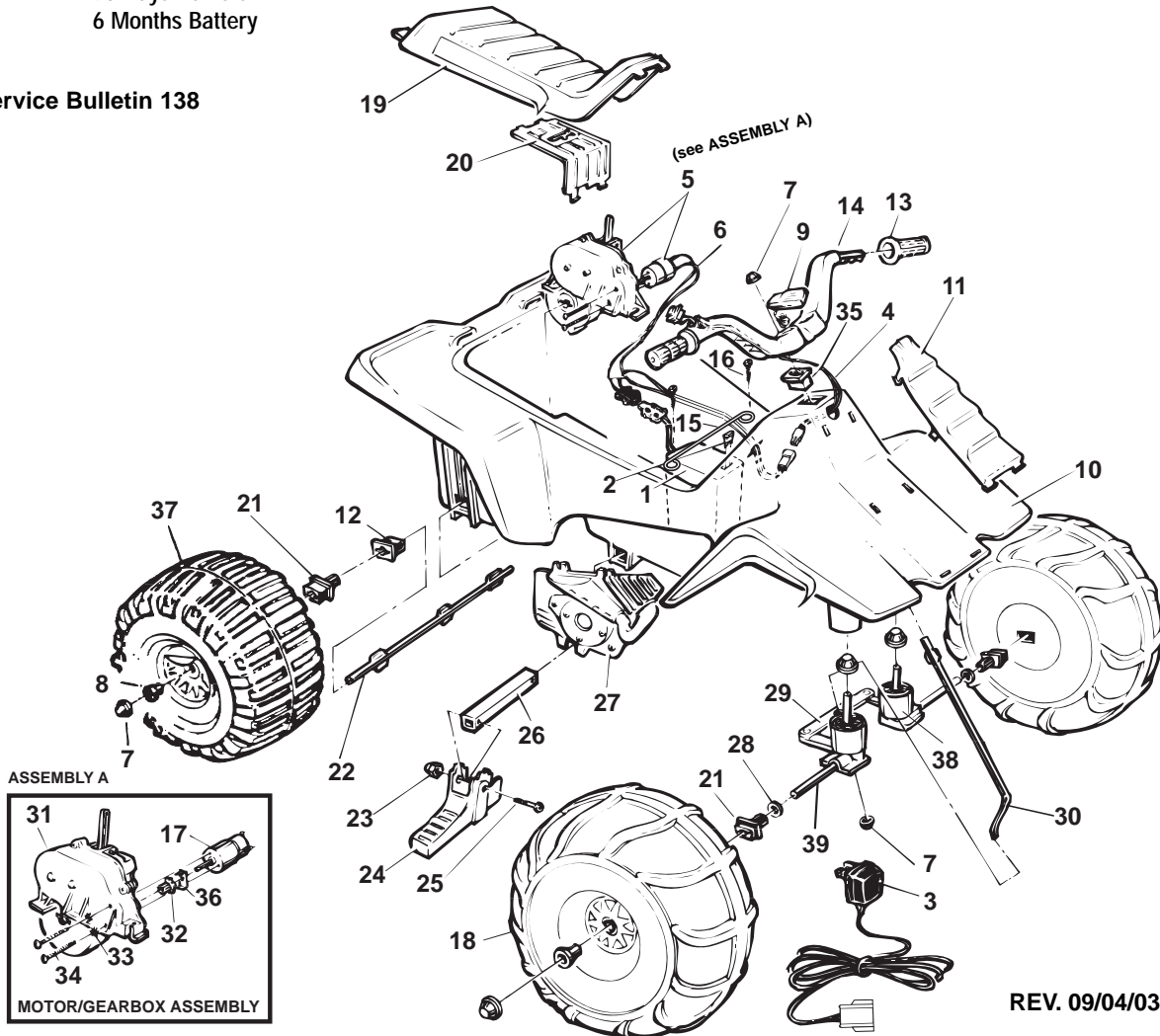
Avail: 1987 - 1990
 Warranty: 90 Days Vehicle
 6 Months Battery

76091-9993 / 83650

SWEET PEA®

6 Volt

See Service Bulletin 138



REV. 09/04/03

| Item No. | Description | Part No. | Qty. | Item No. | Description | Part No. | Qty. | Item No. | Description | Part No. | Qty. |
|-----------|---|-------------------|----------|-----------|-----------------------------|-------------------|----------|------------------------|--|-------------|------|
| 1 | ** Battery 6 Volt (Type H) | 00801-1234 | 1 | 18 | Front Wheels N/A | 80062-0020 | 2 | 36 | D Lock Washer | 0801-0329 | 1 |
| 2 | 25 Amp Fuse Kit | 0801-0151 | 1 | 19 | Seat N/A | 80067-0071 | 1 | 37 | *** Rear Wheel (NLA) | 800862-0015 | 2 |
| 3 | ** 6-Volt Charger | 00801-0976 | 1 | 20 | Motor Cover | 73560-9489 | 1 | | (can use 73670-2459 Pink Mermaid Barbie Wheel) | | |
| 4 | Switch Assm | 78560-9799 | 1 | 21 | Bushing w/Long Extension | 78560-2659 | 2 | 38 | Front Post Bushing N/A | 80009-0086 | 2 |
| 5 | #5 Motor/Gearbox Assy (Include. # 32, 33, 34 and 36) | 74504-9519 | 1 | 22 | Rear Axle | 74504-4539 | 1 | 39 | Front Axle N/A | 80025-0057 | 2 |
| 6 | **Wiring Harness | 74504-9059 | 1 | 23 | Acorn Nut N/A | 0801-0218 | 2 | PARTS NOT SHOWN | | | |
| 7 | .354 Cap Nut | 0801-0251 | 6 | 24 | Footpeg N/A | 80023-0146 | 2 | Tassels | 73680-2129 | 2 | |
| 8 | Wheel Bushing | 78560-2679 | 4 | 25 | 1-1/4" Shoulder Bolt | 0801-0304 | 2 | Decal Sheet N/A | 80017-0416 | 1 | |
| 9 | Microphone | 74550-9479 | 1 | 26 | Footpeg Support | 76940-2129 | 1 | Retainer Clip N/A | 80001-0096 | 2 | |
| 10 | Body N/A | 80005-0203 | 1 | 27 | False Motor Set N/A | 80021-0012 | 1 | Literature Bag N/A | 80034-0459 | 1 | |
| 11 | Grill N/A | 80065-0051 | 1 | 28 | 5/16" Washer | 0801-0253 | 2 | Use & Care Manual N/A | 76091-CCCC | 1 | |
| 12 | Bushing w/o Extension | 74504-2549 | 2 | 29 | Steering Linkage | 74504-4219 | 1 | | | | |
| 13 | Handgrips (Yellow) | 74504-2219 | 2 | 30 | Steering Column | 76940-4239 | 1 | | | | |
| 14 | Handlebar/Switch Assy N/A | 80029-0019 | 1 | 31 | #5 Gearbox | 72629-9259 | 1 | | | | |
| 15 | Battery Retainer | 74504-4429 | 1 | 32 | Motor Drive Gear N/A | 74504-2259 | 1 | | | | |
| 16 | #8 x 7/8" Trusshead Screw | 0801-0228 | 2 | 33 | Star Washer N/A | 0801-0330 | 2 | | | | |
| 17 | Motor w/Pinion | 74590-9539 | 1 | 34 | Motor Bolt | 0801-0269 | 2 | | | | |
| | | | | 35 | Bushing w/Short Extens. N/A | 80009-0035 | 3 | | | | |

**See Service Bulletin 138

*** If made prior to 9-12-89, replace both rear wheels

Bold and Underlined parts are to be purchased and installed by Service Centers only. These items may not be sold directly to consumers by Service Centers or Fisher-Price.

